



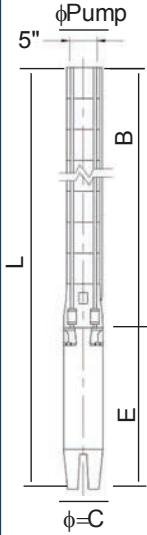
impo

8" PASLANMAZ POMPA
8" SS PUMP



| | |
|--------------------------------------------------------------------------------------------------------------------------------------------------------------------------------------------------------------------------|------------------------------|
| 60 Hz seçim aralığı: Q= 72 m ³ /sa - 132 m ³ /sa Standart Klepe Çıkışı : NPT - Rp 5 Fan tipi: Semiaksiyel Dönüş : Saat Yönü Ters Bağlantı : NEMA Standardına uygun Mil Çapı : 25 mm | |
| Minimum sıvı seviyesi: Emiş süzgecinin altından itibaren 1200 mm. Maksimum pompa dış çapı (Kablo muhafazası ile birlikte): 182 mm | |
| Pompalanan Sıvı: Kimyasal ve mekanik aşındırıcı olmayan akışkan. İzin verilen maksimum kum miktarı = 50 g/m ³ İzin verilen katı parçacık ölçüsü: Max 2mm | |
| İmalat ve güvenlik standartları: TS 11146:1993 TS EN ISO 12100-1:2007 | Tarih 10 / 2012 REV. 0 |
| TS EN 809:2000 98/37/EC TS EN ISO 12100-2:2006 | |

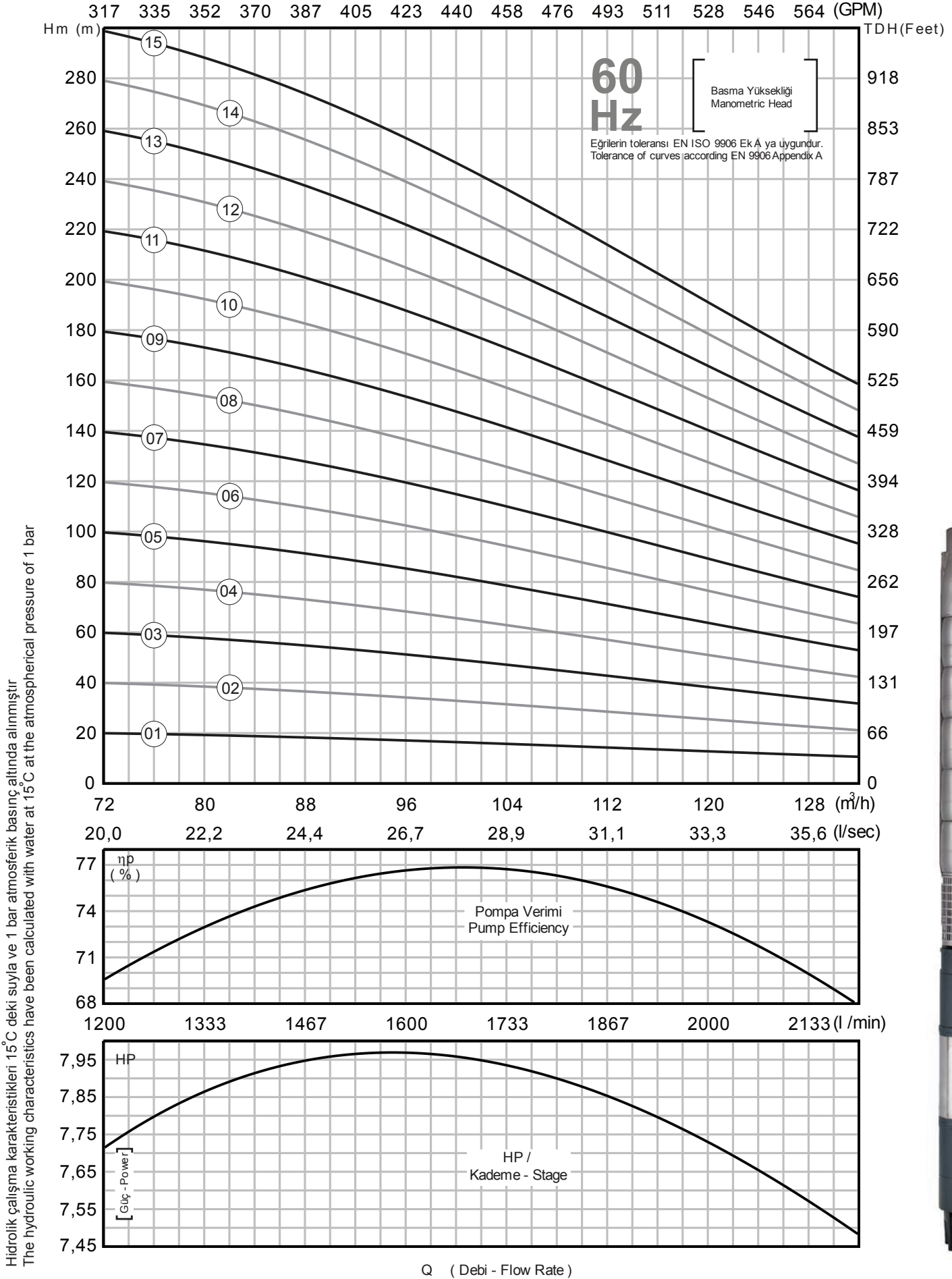
| | |
|-------------------------------------------------------------------------------------------------------------------------------------------------------------------------------------------------------------------------------|-----------------------------|
| Operating range at 60 Hz: Q= 72 m ³ /h - 132 m ³ /h Standard Outlet : NPT - Rp 5 Impeller type: Mixed flow Rotation : CCW Connection : According to NEMA Standard Shaft Diameter : 25 mm | |
| Minimum liquid level (NPSH) : 1200 mm from bottom of suction grid Maximum pump (Wet end) diameter - (Including cable guard): 182 mm | |
| Liquid being pumped: Chemically and mechanically non aggressive. Maximum allowable solid quantity = 50 g/m ³ Solid dimension: Max 2mm | |
| Construction and safety standards: TS 11146:1993 TS EN ISO 12100-1:2007 | Date 10 / 2012 REV. 0 |
| TS EN 809:2000 98/37/EC TS EN ISO 12100-2:2006 | |



| POMPA TİPİ PUMP TYPE | MOTOR MOTEUR | | | ÖLÇÜLER / DIMENSIONS (mm) | | | | | | | | | | AĞIRLIK / WEIGHT (kg) | | | | | | |
|-------------------------|-----------------|----------|------|-----------------------------|-------|------|------|-------|-------|-------|-------|--------|--------|-------------------------|-------|-----|---------------|-------|-----------------|-------|
| | 6" HP | 8" HP | kW | 8"-6" | 8"-8" | 6" | 8" | 8"-6" | 8"-8" | 6" | 8" | 8"-6" | 8"-8" | ø D | MOTOR | | POMPA PUMP | | TOPLAM TOTAL | |
| | | | | L | L | E | E | B | B | ø = C | ø = C | ø PUMP | ø PUMP | | 6" | 8" | 8"-6" | 8"-8" | 8"-6" | 8"-8" |
| SS 877/01 | 7,5 | - | 5,5 | 1200 | - | 630 | - | 570 | - | 145 | - | 174 | - | 5" | 46 | - | 22 | - | 68 | - |
| SS 877/02 | 15 | - | 11 | 1428 | - | 730 | - | 698 | - | 145 | - | 174 | - | 5" | 56 | - | 25 | - | 81 | - |
| SS 877/03 | 25 | - | 18,5 | 1706 | - | 880 | - | 826 | - | 145 | - | 174 | - | 5" | 72 | - | 29 | - | 101 | - |
| SS 877/04 | 30 | 30 | 22 | 1934 | 1895 | 980 | 930 | 954 | 965 | 145 | 195 | 174 | 182 | 5" | 82 | 121 | 32 | 32 | 114 | 153 |
| SS 877/05 | 35 | 35 | 26 | 2112 | 2133 | 1030 | 1040 | 1082 | 1093 | 145 | 195 | 174 | 182 | 5" | 88 | 140 | 35 | 36 | 123 | 176 |
| SS 877/06 | 50 | 50 | 37 | 2400 | 2291 | 1190 | 1070 | 1210 | 1221 | 145 | 195 | 174 | 182 | 5" | 106 | 146 | 39 | 40 | 145 | 186 |
| SS 877/07 | 50 | 50 | 37 | 2528 | 2419 | 1190 | 1070 | 1338 | 1349 | 145 | 195 | 174 | 182 | 5" | 106 | 146 | 42 | 44 | 148 | 190 |
| SS 877/08 | 60 | 60 | 45 | 2736 | 2607 | 1270 | 1130 | 1466 | 1477 | 145 | 195 | 174 | 182 | 5" | 116 | 158 | 45 | 48 | 161 | 206 |
| SS 877/09 | - | 70 | 52 | - | 2815 | - | 1210 | - | 1605 | - | 195 | - | 182 | 5" | - | 177 | - | 52 | - | 229 |
| SS 877/10 | - | 75 | 55 | - | 2983 | - | 1250 | - | 1733 | - | 195 | - | 182 | 5" | - | 184 | - | 55 | - | 239 |
| SS 877/11 | - | 80 | 59 | - | 3141 | - | 1280 | - | 1861 | - | 195 | - | 182 | 5" | - | 190 | - | 59 | - | 249 |
| SS 877/12 | - | 90 | 66 | - | 3354 | - | 1365 | - | 1989 | - | 195 | - | 182 | 5" | - | 204 | - | 63 | - | 267 |
| SS 877/13 | - | 100 | 75 | - | 3547 | - | 1430 | - | 2117 | - | 195 | - | 182 | 5" | - | 218 | - | 67 | - | 285 |
| SS 877/14 | - | 100 | 75 | - | 3675 | - | 1430 | - | 2245 | - | 195 | - | 182 | 5" | - | 218 | - | 71 | - | 289 |
| SS 877/15 | - | 110 | 81 | - | 3873 | - | 1500 | - | 2373 | - | 195 | - | 182 | 5" | - | 230 | - | 75 | - | 305 |

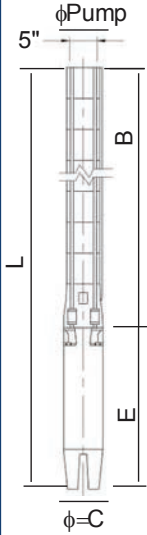
| POMPA TİPİ PUMP TYPE | MOTOR MOTEUR | | | m ³ /h | 0 | 72 | 78 | 84 | 90 | 96 | 102 | 108 | 114 | 120 | 126 | 132 | |
|-------------------------|-----------------|----------|------|------------------------------------------------|---------|-----|------|------|------|------|------|------|------|------|------|------|------|
| | 6" HP | 8" HP | kW | | l / min | 0 | 1200 | 1300 | 1400 | 1500 | 1600 | 1700 | 1800 | 1900 | 2000 | 2100 | 2200 |
| | | | | | gpm | 0 | 317 | 343 | 370 | 396 | 423 | 449 | 476 | 502 | 528 | 555 | 581 |
| SS 877/01 | 7,5 | - | 5,5 | Basma Yüksekliği (m) Total Dynamic Head (m) | 25 | 20 | 19 | 19 | 18 | 17 | 16 | 15 | 14 | 13 | 12 | 11 | |
| SS 877/02 | 15 | - | 11 | | 49 | 40 | 39 | 38 | 36 | 34 | 32 | 30 | 28 | 25 | 24 | 21 | 21 |
| SS 877/03 | 25 | - | 18,5 | | 74 | 60 | 58 | 57 | 54 | 51 | 48 | 45 | 42 | 38 | 35 | 32 | 32 |
| SS 877/04 | 30 | 30 | 22 | | 99 | 80 | 77 | 76 | 71 | 68 | 64 | 61 | 55 | 50 | 47 | 42 | 42 |
| SS 877/05 | 35 | 35 | 26 | | 124 | 100 | 97 | 95 | 89 | 85 | 80 | 76 | 69 | 63 | 59 | 53 | 53 |
| SS 877/06 | 50 | 50 | 37 | | 148 | 120 | 116 | 114 | 107 | 102 | 96 | 91 | 83 | 76 | 71 | 63 | 63 |
| SS 877/07 | 50 | 50 | 37 | | 173 | 140 | 136 | 133 | 125 | 119 | 112 | 106 | 97 | 88 | 82 | 74 | 74 |
| SS 877/08 | 60 | 60 | 45 | | 198 | 160 | 155 | 152 | 143 | 136 | 128 | 121 | 111 | 101 | 94 | 84 | 84 |
| SS 877/09 | - | 70 | 52 | | 222 | 179 | 174 | 171 | 161 | 153 | 144 | 136 | 125 | 113 | 106 | 95 | 95 |
| SS 877/10 | - | 75 | 55 | | 247 | 199 | 194 | 190 | 179 | 170 | 161 | 151 | 138 | 126 | 118 | 105 | 105 |
| SS 877/11 | - | 80 | 59 | | 272 | 219 | 213 | 208 | 196 | 187 | 177 | 167 | 152 | 139 | 129 | 116 | 116 |
| SS 877/12 | - | 90 | 66 | | 297 | 239 | 232 | 227 | 214 | 204 | 193 | 182 | 166 | 151 | 141 | 127 | 127 |
| SS 877/13 | - | 100 | 75 | | 321 | 259 | 252 | 246 | 232 | 222 | 209 | 197 | 180 | 164 | 153 | 137 | 137 |
| SS 877/14 | - | 100 | 75 | | 346 | 279 | 271 | 265 | 250 | 239 | 225 | 212 | 194 | 177 | 165 | 148 | 148 |
| SS 877/15 | - | 110 | 81 | | 371 | 299 | 290 | 284 | 268 | 256 | 241 | 227 | 208 | 189 | 176 | 158 | 158 |

Performans eğrileri Performance Curves 1 – 15



| | |
|------------------------------------------------------------------------|-------------------------|
| 60 Hz seçim aralığı: Q= 80 m ³ /sa - 140 m ³ /sa | |
| Standart Klepe Çıkışı : NPT - Rp 5 | |
| Fan tipi: Semiaksiyel | |
| Dönüş : Saat Yönü Ters | |
| Bağlantı : NEMA Standardına uygun | |
| Mil Çapı : 25 mm | |
| Minimum sıvı seviyesi: Emiş süzgecinin altından itibaren 1200 mm. | |
| Maksimum pompa dış çapı (Kablo muhafazası ile birlikte): 182 mm | |
| Pompalanan Sıvı: Kimyasal ve mekanik aşındırıcı olmayan akışkan. | |
| İzin verilen maksimum kum miktarı = 50 g/m ³ | |
| İzin verilen katı parçacık ölçüsü: Max 2mm | |
| İmalat ve güvenlik standartları: | Tarih |
| TS 11146:1993 | TS EN 809:2000 98/37/EC |
| TS EN ISO 12100-1:2007 | TS EN ISO 12100-2:2006 |
| | REV. 0 |

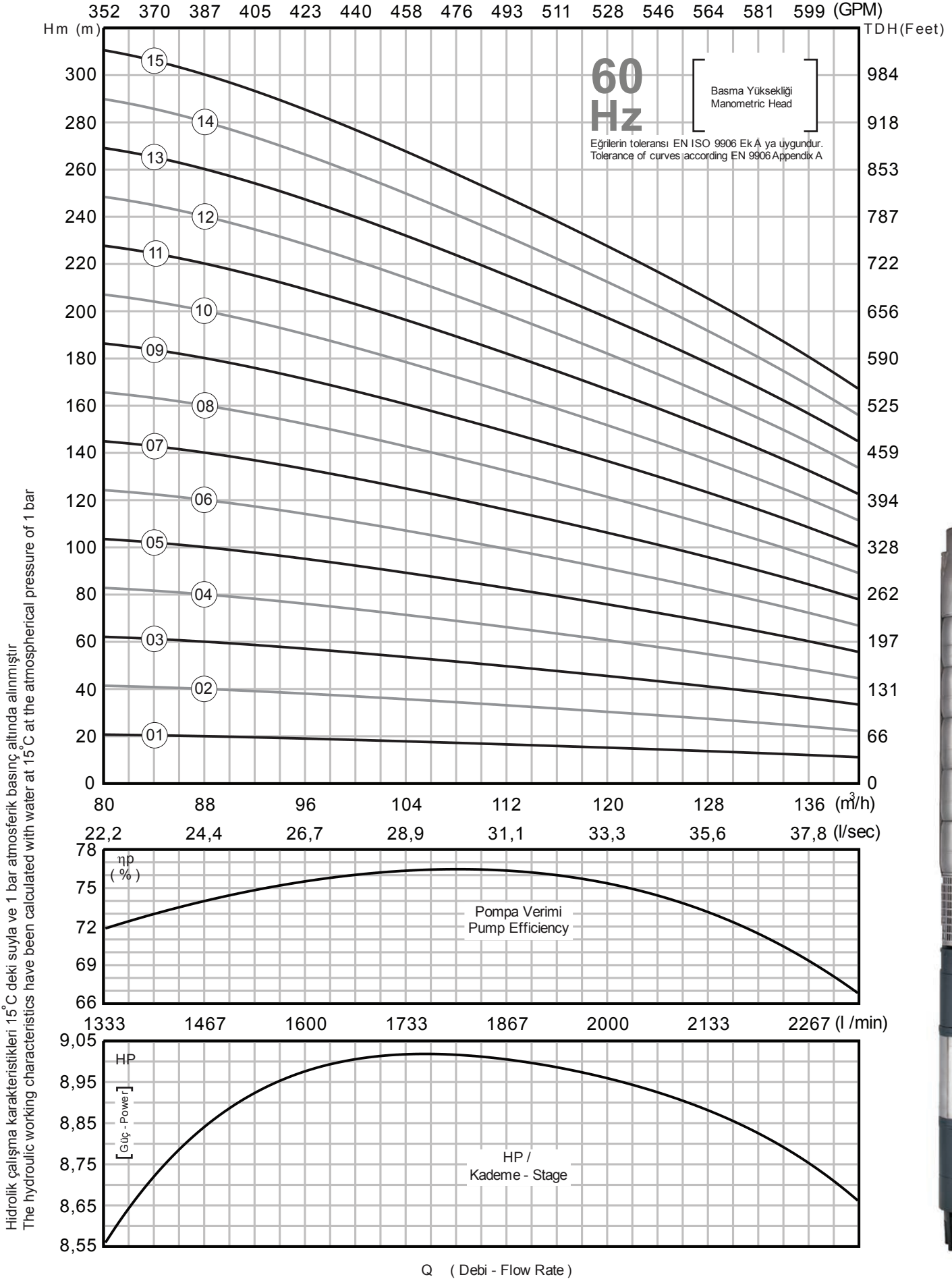
| | |
|---------------------------------------------------------------------------|-------------------------|
| Operating range at 60 Hz: Q= 80 m ³ /h - 140 m ³ /h | |
| Standard Outlet : NPT - Rp 5 | |
| Impeller type: Mixed flow | |
| Rotation : CCW | |
| Connection : According to NEMA Standard | |
| Shaft Diameter : 25 mm | |
| Minimum liquid level (NPSH) : 1200 mm from bottom of suction grid | |
| Maximum pump (Wet end) diameter - (Including cable guard): 182 mm | |
| Liquid being pumped: Chemically and mechanically non aggressive. | |
| Maximum allowable solid quantity = 50 g/m ³ | |
| Solid dimension: Max 2mm | |
| Construction and safety standards: | Date |
| TS 11146:1993 | TS EN 809:2000 98/37/EC |
| TS EN ISO 12100-1:2007 | TS EN ISO 12100-2:2006 |
| | REV. 0 |



| POMPA TİPİ PUMP TYPE | MOTOR MOTEUR | | | ÖLÇÜLER / DIMENSIONS (mm) | | | | | | | | | | AĞIRLIK / WEIGHT (kg) | | | | | | |
|-------------------------|-----------------|-------|------|-----------------------------|-------|------|------|-------|-------|-------|-------|--------|--------|-------------------------|-------|-----|------------|-------|--------------|-------|
| | 6" HP | 8" HP | kW | 8"-6" | 8"-8" | 6" | 8" | 8"-6" | 8"-8" | 6" | 8" | 8"-6" | 8"-8" | ø D | MOTOR | | POMPA PUMP | | TOPLAM TOTAL | |
| | | | | L | L | E | E | B | B | ø = C | ø = C | ø PUMP | ø PUMP | | 6" | 8" | 8"-6" | 8"-8" | 8"-6" | 8"-8" |
| SS 895/01 | 10 | - | 7,5 | 1220 | - | 650 | - | 570 | - | 145 | - | 174 | - | 5" | 48 | - | 22 | - | 70 | - |
| SS 895/02 | 17,5 | - | 13 | 1478 | - | 780 | - | 698 | - | 145 | - | 174 | - | 5" | 60 | - | 25 | - | 85 | - |
| SS 895/03 | 25 | - | 18,5 | 1706 | - | 880 | - | 826 | - | 145 | - | 174 | - | 5" | 72 | - | 29 | - | 101 | - |
| SS 895/04 | 35 | 35 | 26 | 1984 | 2005 | 1030 | 1040 | 954 | 965 | 145 | 195 | 174 | 182 | 5" | 88 | 140 | 32 | 35 | 120 | 175 |
| SS 895/05 | 40 | 40 | 30 | 2192 | 2133 | 1110 | 1040 | 1082 | 1093 | 145 | 195 | 174 | 182 | 5" | 98 | 140 | 35 | 37 | 133 | 177 |
| SS 895/06 | 50 | 50 | 37 | 2400 | 2291 | 1190 | 1070 | 1210 | 1221 | 145 | 195 | 174 | 182 | 5" | 106 | 146 | 38 | 40 | 144 | 186 |
| SS 895/07 | 60 | 60 | 45 | 2608 | 2479 | 1270 | 1130 | 1338 | 1349 | 145 | 195 | 174 | 182 | 5" | 116 | 158 | 41 | 42 | 157 | 200 |
| SS 895/08 | - | 70 | 52 | - | 2687 | - | 1210 | - | 1477 | - | 195 | - | 182 | 5" | - | 177 | - | 45 | - | 222 |
| SS 895/09 | - | 75 | 55 | - | 2855 | - | 1250 | - | 1605 | - | 195 | - | 182 | 5" | - | 184 | - | 47 | - | 231 |
| SS 895/10 | - | 80 | 59 | - | 3013 | - | 1280 | - | 1733 | - | 195 | - | 182 | 5" | - | 190 | - | 50 | - | 240 |
| SS 895/11 | - | 90 | 66 | - | 3226 | - | 1365 | - | 1861 | - | 195 | - | 182 | 5" | - | 204 | - | 53 | - | 257 |
| SS 895/12 | - | 100 | 75 | - | 3419 | - | 1430 | - | 1989 | - | 195 | - | 182 | 5" | - | 218 | - | 55 | - | 273 |
| SS 895/13 | - | 110 | 81 | - | 3617 | - | 1500 | - | 2117 | - | 195 | - | 182 | 5" | - | 230 | - | 58 | - | 288 |
| SS 895/14 | - | 110 | 81 | - | 3745 | - | 1500 | - | 2245 | - | 195 | - | 182 | 5" | - | 230 | - | 60 | - | 290 |
| SS 895/15 | - | 125 | 92 | - | 3993 | - | 1620 | - | 2373 | - | 195 | - | 182 | 5" | - | 252 | - | 63 | - | 315 |

| POMPA TİPİ PUMP TYPE | MOTOR MOTEUR | | | m ³ /h | 0 | 80 | 85 | 90 | 95 | 100 | 105 | 110 | 115 | 120 | 125 | 130 | 135 | 140 |
|-------------------------|-----------------|-------|------|------------------------------------------------|-----|------|------|------|------|------|------|------|------|------|------|------|------|------|
| | 6" HP | 8" HP | kW | l / min | 0 | 1333 | 1417 | 1500 | 1583 | 1667 | 1750 | 1833 | 1917 | 2000 | 2083 | 2167 | 2250 | 2333 |
| | | | | gpm | 0 | 352 | 374 | 396 | 418 | 440 | 462 | 484 | 506 | 528 | 550 | 572 | 594 | 616 |
| SS 895/01 | 10 | - | 7,5 | Basma Yüksekliği (m) Total Dynamic Head (m) | 25 | 21 | 20 | 20 | 19 | 19 | 18 | 17 | 16 | 15 | 14 | 13 | 12 | 11 |
| SS 895/02 | 17,5 | - | 13 | | 49 | 41 | 41 | 40 | 38 | 37 | 35 | 34 | 32 | 31 | 28 | 27 | 24 | 22 |
| SS 895/03 | 25 | - | 18,5 | | 74 | 62 | 61 | 60 | 57 | 56 | 53 | 51 | 48 | 46 | 43 | 40 | 37 | 33 |
| SS 895/04 | 35 | 35 | 26 | | 98 | 83 | 81 | 79 | 76 | 74 | 71 | 68 | 63 | 61 | 57 | 53 | 49 | 45 |
| SS 895/05 | 40 | 40 | 30 | | 123 | 103 | 102 | 99 | 95 | 93 | 89 | 85 | 79 | 76 | 71 | 67 | 61 | 56 |
| SS 895/06 | 50 | 50 | 37 | | 147 | 124 | 122 | 119 | 114 | 111 | 106 | 102 | 95 | 92 | 85 | 80 | 73 | 67 |
| SS 895/07 | 60 | 60 | 45 | | 172 | 145 | 143 | 139 | 133 | 130 | 124 | 119 | 111 | 107 | 100 | 93 | 86 | 78 |
| SS 895/08 | - | 70 | 52 | | 196 | 165 | 163 | 159 | 152 | 149 | 142 | 136 | 127 | 122 | 114 | 107 | 98 | 89 |
| SS 895/09 | - | 75 | 55 | | 221 | 186 | 183 | 179 | 171 | 167 | 159 | 153 | 143 | 138 | 128 | 120 | 110 | 100 |
| SS 895/10 | - | 80 | 59 | | 245 | 207 | 204 | 199 | 189 | 186 | 177 | 170 | 159 | 153 | 142 | 133 | 122 | 111 |
| SS 895/11 | - | 90 | 66 | | 270 | 228 | 224 | 219 | 208 | 204 | 195 | 187 | 175 | 168 | 156 | 147 | 135 | 123 |
| SS 895/12 | - | 100 | 75 | | 294 | 248 | 244 | 238 | 227 | 223 | 213 | 204 | 190 | 183 | 171 | 160 | 147 | 134 |
| SS 895/13 | - | 110 | 81 | | 319 | 269 | 265 | 258 | 246 | 241 | 230 | 221 | 206 | 199 | 185 | 173 | 159 | 145 |
| SS 895/14 | - | 110 | 81 | | 343 | 290 | 285 | 278 | 265 | 260 | 248 | 237 | 222 | 214 | 199 | 187 | 171 | 156 |
| SS 895/15 | - | 125 | 92 | | 368 | 310 | 305 | 298 | 284 | 278 | 266 | 254 | 238 | 229 | 213 | 200 | 184 | 167 |

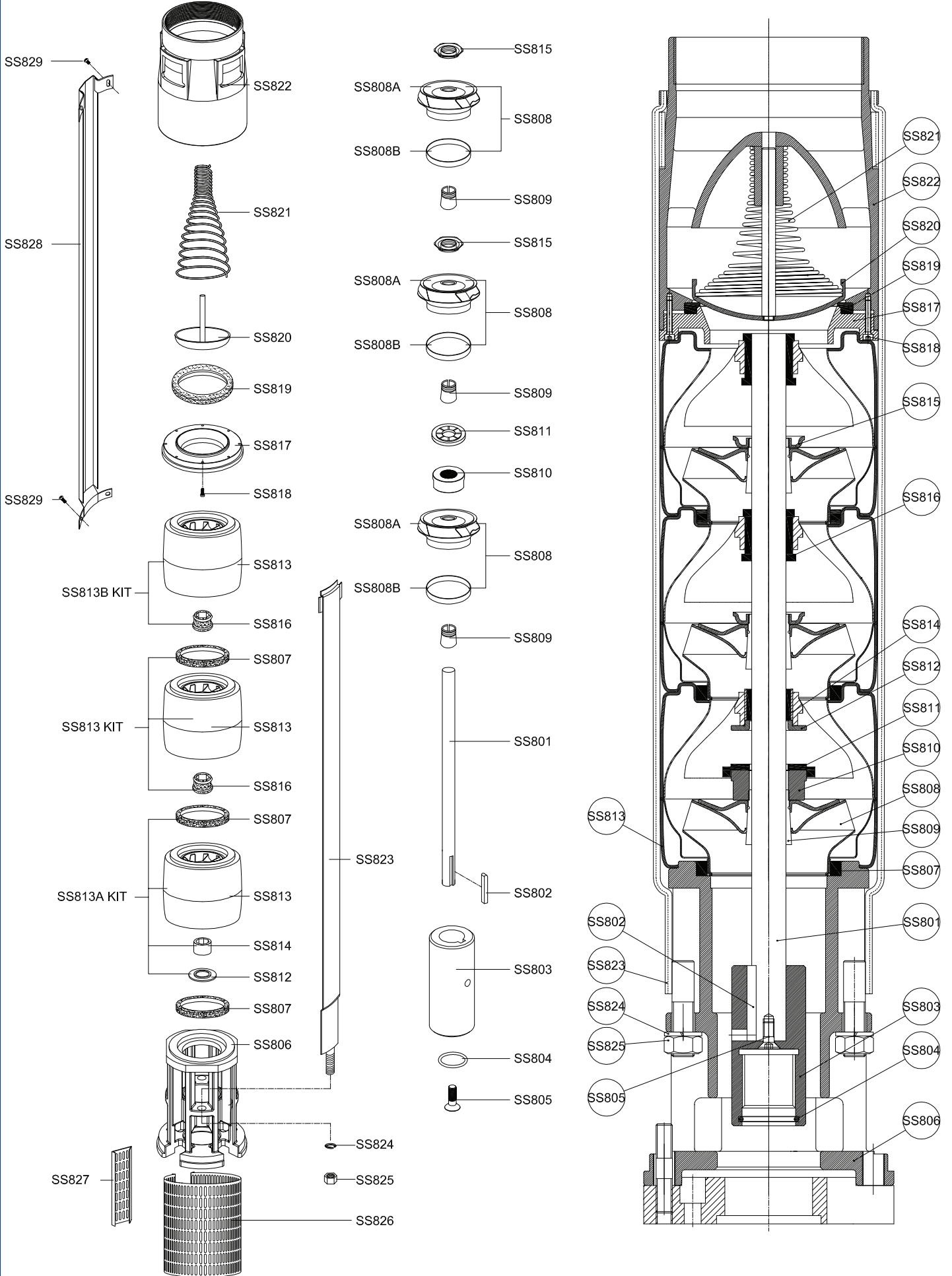
Performans eğrileri Performance Curves 1 – 15



SS 877 - SS 895

İmpo
PARÇALAR VE MONTAJ
COMPONENTS AND ASSEMBLY

60 Hz



| Parça No - Part No | Tanım - Description | Malzeme - Material |
|--------------------|--------------------------------------------------|-------------------------------------------------------------|
| SS801 | Mil - Shaft | Paslanmaz çelik / (AISI 420) - Stainless steel / (AISI 420) |
| SS802 | Kama - Key | Paslanmaz çelik / (AISI 304) - Stainless steel / (AISI 304) |
| SS803 | Kaplin - Coupling | Paslanmaz çelik / (AISI 420) - Stainless steel / (AISI 420) |
| SS804 | Oring - O-Ring | Kauçuk - Rubber |
| SS805 | Kaplin Civatası - Coupling Screw | Paslanmaz çelik / (AISI 304) - Stainless steel / (AISI 304) |
| SS806 | Emme Kutusu - Support | Paslanmaz çelik / (AISI 304) - Stainless steel / (AISI 304) |
| SS807 | Aşınma Halkası - Neck Ring | Kauçuk / Noril - Rubber / Noryl |
| SS808A | Fan - Impeller | Paslanmaz çelik / (AISI 304) - Stainless steel / (AISI 304) |
| SS808B | Fan Aşınma Bileziği - Ring Of Impeller | Paslanmaz çelik / (AISI 304) - Stainless steel / (AISI 304) |
| SS809 | Konik Kama - Split Cone | Paslanmaz çelik / (AISI 420) - Stainless steel / (AISI 420) |
| SS810 | Stoplama Somunu - Nut for Stop ring | Paslanmaz çelik / (AISI 420) - Stainless steel / (AISI 420) |
| SS811 | Stoplama Plastiği - Spacing Washer For Stop Ring | Kompozit - Composite |
| SS812 | Stoplama Üst Metali - Stop Ring | Paslanmaz çelik / (AISI 420) - Stainless steel / (AISI 420) |
| SS813 | Difüzör - Diffuser | Paslanmaz çelik / (AISI 304) - Stainless steel / (AISI 304) |
| SS813A KİT | Difüzör - Diffuser | Paslanmaz çelik / (AISI 304) - Stainless steel / (AISI 304) |
| | Aşınma Halkası - Neck Ring | Kauçuk / Noril - Rubber / Noryl |
| | Orta Burç - Bearing | Kauçuk / Çelik - Rubber / Steel |
| | Stoplama Üst Metali - Stop Ring | Paslanmaz çelik / (AISI 420) - Stainless steel / (AISI 420) |
| SS813 KİT | Difüzör - Diffuser | Paslanmaz çelik / (AISI 304) - Stainless steel / (AISI 304) |
| | Difüzör yatağı - Bearing | Kauçuk - Rubber |
| | Aşınma Halkası - Neck Ring | Kauçuk / Noril - Rubber / Noryl |
| SS813B KİT | Difüzör - Diffuser | Paslanmaz çelik / (AISI 304) - Stainless steel / (AISI 304) |
| | Difüzör yatağı - Bearing | Kauçuk - Rubber |
| SS814 | Orta Burç - Bearing | Kauçuk / Çelik - Rubber / Steel |
| SS815 | Konik Kama Somunu - Split Cone Nut | Paslanmaz çelik / (AISI 304) - Stainless steel / (AISI 304) |
| SS816 | Difüzör yatağı - Bearing | Kauçuk - Rubber |
| SS817 | Klepe Ringi - Valve Ring | Paslanmaz çelik / (AISI 304) - Stainless steel / (AISI 304) |
| SS818 | Klepe Ringi Civatası - Valve Ring Screw | Paslanmaz çelik / (AISI 304) - Stainless steel / (AISI 304) |
| SS819 | Klepe Lastiği - Valve Seat | Kauçuk - Rubber |
| SS820 | Klepe Diski - Valve Cone | Paslanmaz çelik / (AISI 304) - Stainless steel / (AISI 304) |
| SS821 | Klepe Yay - Valve Spring | Paslanmaz çelik / (AISI 304) - Stainless steel / (AISI 304) |
| SS822 | Klepe (NPT - Rp 5) - Discharge (NPT - Rp 5) | Paslanmaz çelik / (AISI 304) - Stainless steel / (AISI 304) |
| SS822-A | Klepe (5" Normal) - Discharge (5" Normal) | Paslanmaz çelik / (AISI 304) - Stainless steel / (AISI 304) |
| SS823 | Lama - Strap | Paslanmaz çelik / (AISI 304) - Stainless steel / (AISI 304) |
| SS824 | Lama yaylı rondelası - Strap spring washer | Paslanmaz çelik / (AISI 304) - Stainless steel / (AISI 304) |
| SS825 | Lama Somunu - Strap Nut | Paslanmaz çelik / (AISI 304) - Stainless steel / (AISI 304) |
| SS826 | Süzgeç - Strainer | Paslanmaz çelik / (AISI 304) - Stainless steel / (AISI 304) |
| SS827 | Süzgeç kilidi - Strainer lock | Paslanmaz çelik / (AISI 304) - Stainless steel / (AISI 304) |
| SS828 | Kablo Muhafaza Sacı - Cable Guard | Paslanmaz çelik / (AISI 304) - Stainless steel / (AISI 304) |
| SS829 | Kablo Muhafaza Sacı civatası - Cable Guard Screw | Paslanmaz çelik / (AISI 304) - Stainless steel / (AISI 304) |

Parça siparişi verirken belirtilmesi gereken bilgiler

Örnek Sipariş: 8" Motor Flanşlı SS 872/ 10 kademe pompa mili

877 . 801 . 8 . 10

Pompa seri adı ■ Parça resim no ■ Motor çapı ■ Kademe sayısı
(Gerekli ise) (Gerekli ise)

Required informations to order a component

Example Order: A pump shaft of SS 872 / 10 stage with 8" motor flange

877 . 801 . 8 . 10

Pump serie name ■ Component drawing no ■ Motor size ■ Stage
(if necessary) (if necessary)